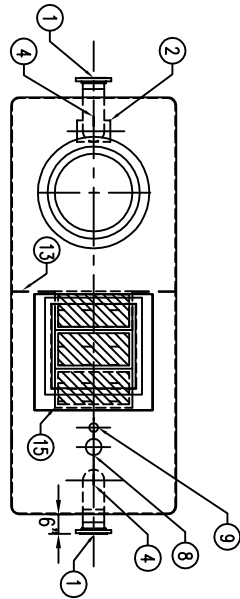
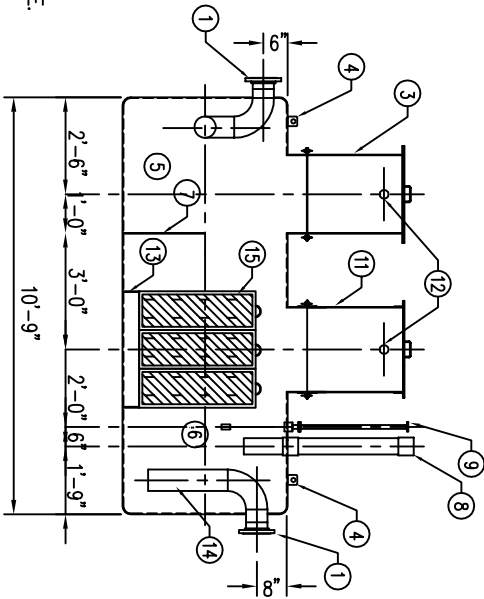


**SPECIFICATIONS SUMMARY:**

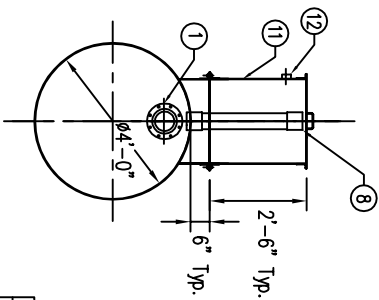
CAPACITY: 1000 GALLON  
 TYPE: SINGLE WALL  
 FLOW RATE: 0 - 100 GPM  
 MATERIAL: CARBON STEEL  
 THICKNESS:  
 SHELL - 10 GA.  
 HEADS - 10 GA.  
 SURFACES TREATMENT:  
 INNER - NONE  
 OUTER - SSPC NO. 6 BLAST  
 COATINGS:  
 INNER - NONE  
 OUTER - PER UL1746  
 CONSTRUCTION:  
 OPERATING PRESSURE: ATMOSPHERIC



PLAN



ELEVATION



OUTLET END VIEW

**TANK DESCRIPTIONS:**

- ① 150# R.F. 6" FLANGE
- ② DIFFUSION TEE
- ③ 24"Ø MANWAY WITH BOLT-ON EXTENSION
- ④ LIFTING LUGS
- ⑤ SEDIMENT CHAMBER
- ⑥ SEPARATION CHAMBER
- ⑦ SLUDGE BAFFLE
- ⑧ 4"Ø RISER PIPE FOR OIL PUMP-OUT
- ⑨ 2"Ø RISER PIPE FOR LEVEL SENSOR
- ⑩ (NOT USED)
- ⑪ 26" X 26" SQUARE MANWAY WITH BOLT-ON EXTENSION
- ⑫ 2"Ø VENT
- ⑬ MEDIA BAFFLE
- ⑭ OUTLET DOWNCOMER
- ⑮ COALESCING MEDIA PACK

**NOTES:**

1. VENT SIZING PER UL58. ALL VENT PIPING BY OTHERS.
2. ALL EXTERIOR PIPING IS BY OTHERS.
3. HYDRO-QUIP RECOMMENDS A MINIMUM SLOPE OF 1/16" PER FOOT FOR ALL GRAVITY PIPING.
4. OIL STORAGE CAPACITY IS 30% OF TOTAL TANK VOLUME.
5. INSTALL PER FURNISHED INSTRUCTIONS.
6. THIRTY (30) YEAR WARRANTY PROVIDED ON EXTERIOR CORROSION PROTECTION.
7. 1/8" THICK NEOPRENE 50 DMS GASKETS AT ALL CONNECTIONS.

REV.	DESCRIPTION	DATE	INT.
<b>Wash Bay Solutions</b> Engineered Wash & Reclaim Systems <b>MODEL WB-QB-1048</b> <b>OIL/WATER SEPARATOR</b>			
REF:	FILE: H081048rev2MechanByDWG	DATE: 1/16/17	SCALE: 1/4" = 1'
PROJECT:	DRN. BY: TBA		
	CHKD. BY:		
<small>THIS DRAWING IS PROPERTY OF HOBAS CORP. AND MUST NOT BE COPIED, LOANED OR REPRODUCED WITHOUT WRITTEN PERMISSION.</small>			
			REV. A