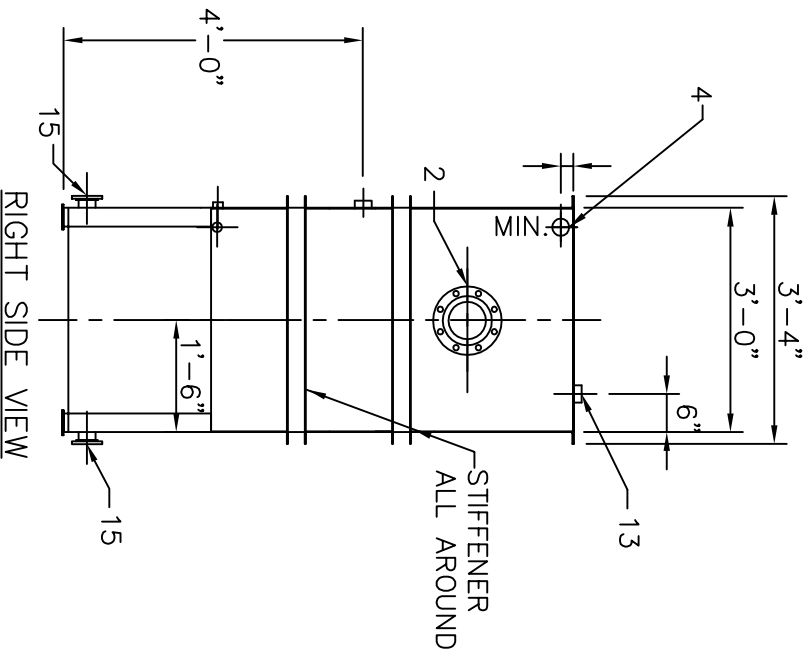
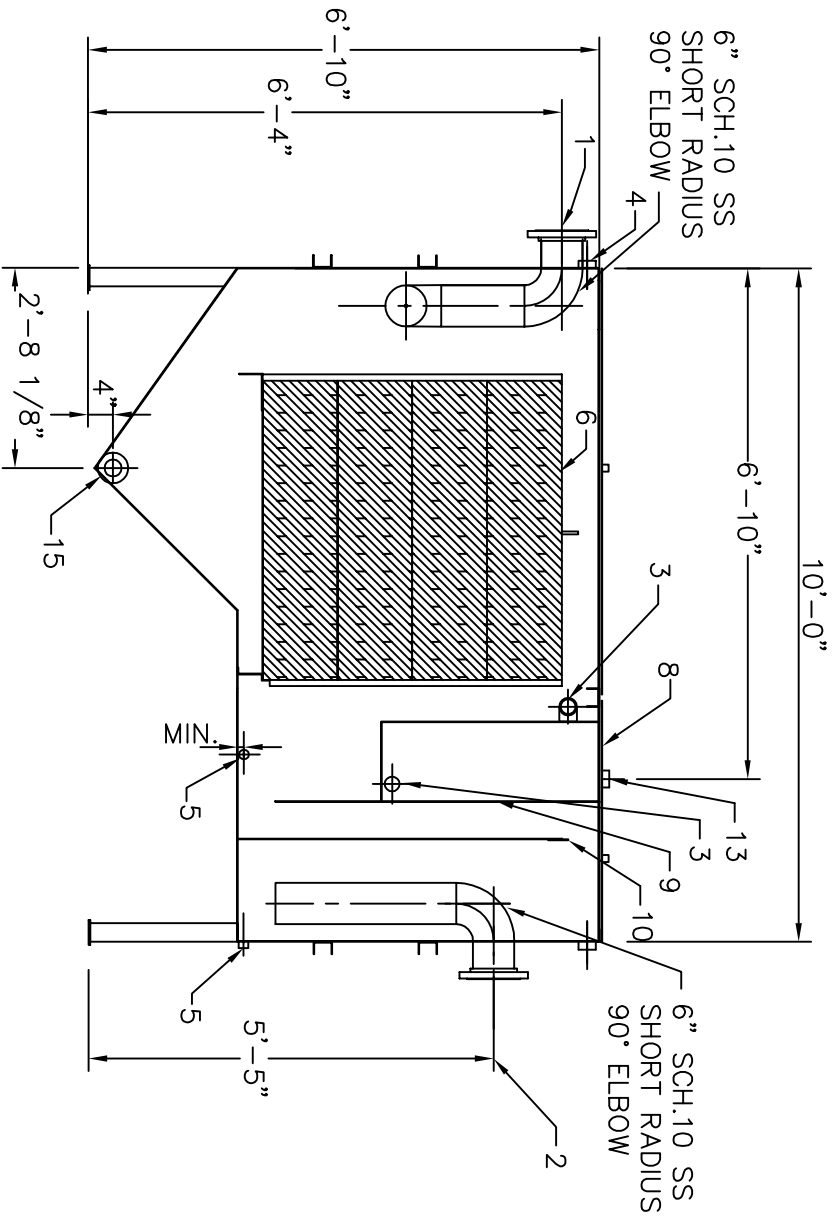


ITEM	QTY	DESCRIPTION	ITEM	QTY	DESCRIPTION
1	1	6"-150# RF FLG. INLET	9	1	OIL STOP WEIR
2	1	6"-150# RF FLG. OUTLET	10	1	ADJ. OVERFLOW WEIR
3	1	2" FNPT OIL OUTLET	11	1	OIL STORAGE COMPARTMENT
4	2	2" FNPT VENT	12	0	OPT. SIGHT GLASS PORTS
5	2	1" FNPT DRAIN	13	1	2" NPT FITTING
6	1	COALESCING PLATES	14	0	LIFTING LUGS
7	1	PVC OIL SKIMMER	15	2	3" 150# RF FLG. SLUDGE DRAIN
8	3	REMOVABLE COVER			

SHIPPING WEIGHT 3910 LBS
 OPERATING WEIGHT 12,000 LBS
 SEPARATOR VOLUME 910 GALLONS
 EFFLUENT TANK VOLUME 145 GALLONS
 SLUDGE VOLUME 115 GALLONS
 COALESCING AREA 48 CU FT
 OIL STORAGE COMPARTMENT 60 GALLONS



ELEVATION

RIGHT SIDE VIEW

NOTES

1. MATERIAL: 3/16" 304SS.
2. GASKET: NEOPRENE.
3. HARDWARE: 18-8 STAINLESS STEEL
4. INTERNAL PIPE SCH 40 PVC

REV.	DESCRIPTION	DATE	INIT.
	WASHBAYSOLUTIONS.COM Water Treatment Systems GENERAL ARRANGEMENT MODEL WB-HP-3		
PROJECT:		DATE:	DRN. BY: PND
REF:		SCALE:	CHKD.BY:
FILE: WB-HP-3		09/11/08	
THIS DRAWING IS PROPERTY OF WASHBAYSOLUTIONS.COM AND MUST NOT BE COPIED, LOANED OR DISTRIBUTED WITHOUT WRITTEN PERMISSION.		3/8" = 1'	REV: 0