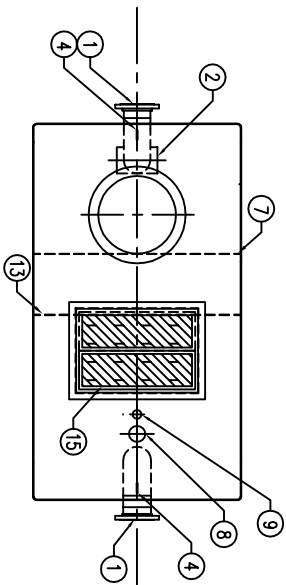
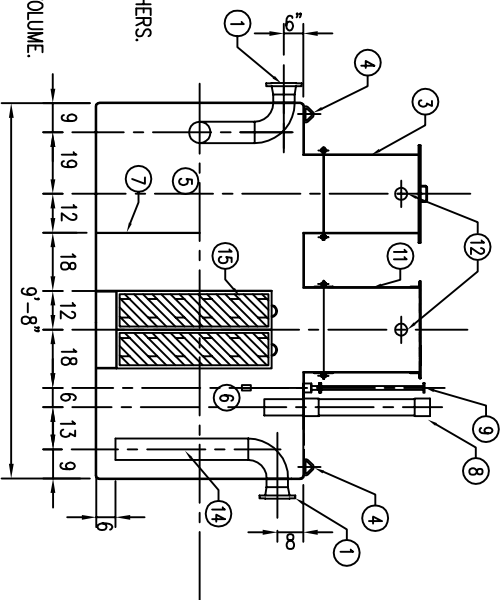


SPECIFICATIONS SUMMARY:

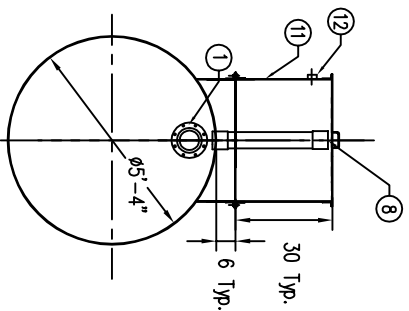
CAPACITY: 1500 GALLON
 TYPE: SINGLE WALL
 FLOW RATE: 0 - 150 GPM
 MATERIAL: CARBON STEEL
 THICKNESS:
 SHELL - 10 GA.
 HEADS - 7 GA.
 SURFACES TREATMENT:
 INNER - NONE
 OUTER - SSPC SP-6 BLAST
 COATINGS:
 INNER - NONE
 OUTER - URETHANE (70 MILS)
 CONSTRUCTION:
 OPERATING PRESSURE: ATMOSPHERIC



PLAN



ELEVATION



OUTLET END VIEW

TANK DESCRIPTIONS:

- ① 150# R.F. 6" FLANGE
- ② DIFFUSION TEE
- ③ 24"Ø MANWAY WITH BOLT-ON EXTENSION
- ④ LIFTING LUGS
- ⑤ SEDIMENT CHAMBER
- ⑥ SEPARATION CHAMBER
- ⑦ SLUDGE BAFFLE
- ⑧ 4"Ø RISER PIPE FOR OIL PUMP-OUT
- ⑨ 2"Ø RISER PIPE FOR LEVEL SENSOR
- ⑩ (NOT USED)
- ⑪ 26" X 38" MANWAY WITH BOLT-ON EXTENSION
- ⑫ 2"Ø VENT
- ⑬ MEDIA BAFFLE
- ⑭ OUTLET DOWNCOMER
- ⑮ COALESCING MEDIA PACK

NOTES:

1. VENT SIZING PER UL58. ALL VENT PIPING BY OTHERS.
2. ALL EXTERIOR PIPING IS BY OTHERS.
3. HYDRO-QUIP RECOMMENDS A MINIMUM SLOPE OF 1/16" PER FOOT FOR ALL GRAVITY PIPING.
4. OIL STORAGE CAPACITY IS 30% OF TOTAL TANK VOLUME.
5. INSTALL PER FURNISHED INSTRUCTIONS.
6. THIRTY (30) YEAR WARRANTY PROVIDED ON EXTERIOR CORROSION PROTECTION.
7. 1/8" THICK NEOPRENE 50 DMS GASKETS AT ALL CONNECTIONS.

REV.	DESCRIPTION	DATE	INT.
Wash Bay Solutions Engineered Wash & Reclaim Systems			
MODEL WB-QB-1564-SW OIL/WATER SEPARATOR		DRN. BY: TBA CHD.BY:	
PROJECT:		DATE: 8/15/14	
REF:	FILE: H081564swr1.DWG	SCALE: 1/4" = 1'	REV: A
<small>THIS DRAWING IS A PROPERTY OF WASH BAY SOLUTIONS AND IS NOT TO BE REPRODUCED, COPIED, OR TRANSMITTED IN ANY FORM OR BY ANY MEANS, ELECTRONIC OR MECHANICAL, WITHOUT THE WRITTEN PERMISSION OF WASH BAY SOLUTIONS.</small>			