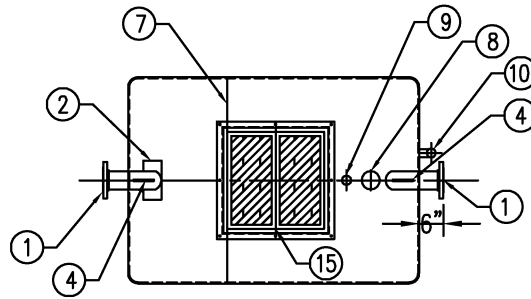
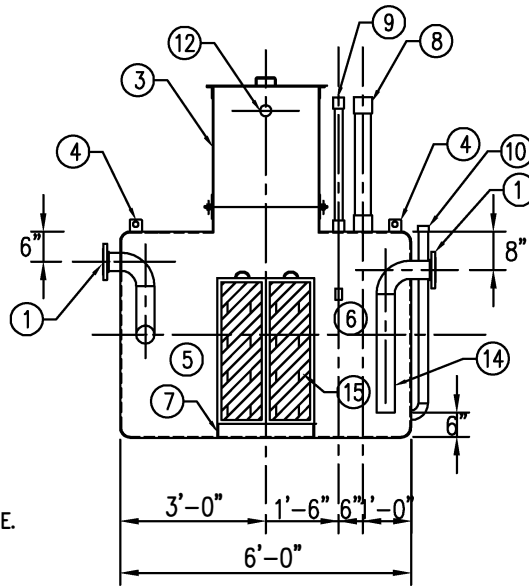


SPECIFICATIONS SUMMARY:

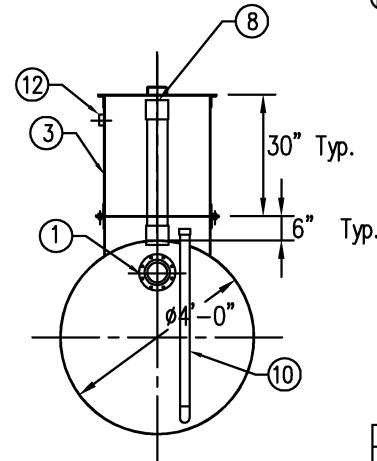
CAPACITY: 550 GALLON
 TYPE: DOUBLE WALL
 FLOW RATE: 0 - 55 GPM
 MATERIAL: CARBON STEEL
 THICKNESS:
 SHELL - 10 GA.
 HEADS - 10 GA.
 SURFACES TREATMENT:
 INNER - NONE
 OUTER - SSPC NO. 6 BLAST
 COATINGS:
 INNER - NONE
 OUTER - 70 MILS BLACK URETHANE
 CONSTRUCTION:
 OPERATING PRESSURE: ATMOSPHERIC



PLAN



ELEVATION



END VIEW

TANK DESCRIPTIONS:

- ① 150# R.F. 4" FLANGE
- ② DIFFUSION TEE
- ③ 26" X 26" SQUARE MANWAY WITH BOLT-ON EXTENSION
- ④ LIFTING LUGS
- ⑤ SEDIMENT CHAMBER
- ⑥ SEPARATION CHAMBER
- ⑦ SLUDGE BAFFLE
- ⑧ 4"Ø RISER PIPE FOR OIL PUMP-OUT
- ⑨ 2"Ø RISER PIPE FOR LEVEL SENSOR
- ⑩ 2"Ø NPT FOR INTERSTITIAL MONITOR PIPE
- ⑪ (NOT USED)
- ⑫ 2"Ø VENT
- ⑬ MEDIA BAFFLE
- ⑭ OUTLET DOWNCOMER
- ⑮ COALESCING MEDIA PACK

NOTES:

1. VENT SIZING PER UL58. ALL VENT PIPING BY OTHERS.
2. ALL EXTERIOR PIPING IS BY OTHERS.
3. HYDRO-QUIP RECOMMENDS A MINIMUM SLOPE OF 1/16" PER FOOT FOR ALL GRAVITY PIPING.
4. OIL STORAGE CAPACITY IS 30% OF TOTAL TANK VOLUME.
5. INSTALL PER FURNISHED INSTRUCTIONS.
6. THIRTY (30) YEAR WARRANTY PROVIDED ON EXTERIOR CORROSION PROTECTION.
7. 1/8" THICK NEOPRENE 50 DMS GASKETS AT ALL CONNECTIONS.

REV.	DESCRIPTION	DATE	INT.
WASH BAY SOLUTIONS			
WATER TREATMENT SYSTEMS			
MODEL WB-QB-548DW			DRN. BY: TRA
OIL/WATER SEPARATOR			CHKD. BY:
PROJECT:		DATE: 3/30/12	
REF:	FILE: HOB548dw4.DWG	SCALE: 5/16" = 1'	
THIS DRAWING IS PROPERTY OF HYDRO QUIP AND MUST NOT BE COPIED, LOANED OR DISTRIBUTED WITHOUT WRITTEN PERMISSION.			REV: A