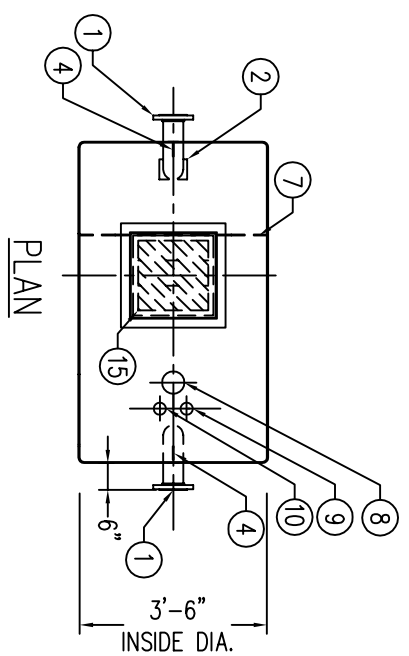
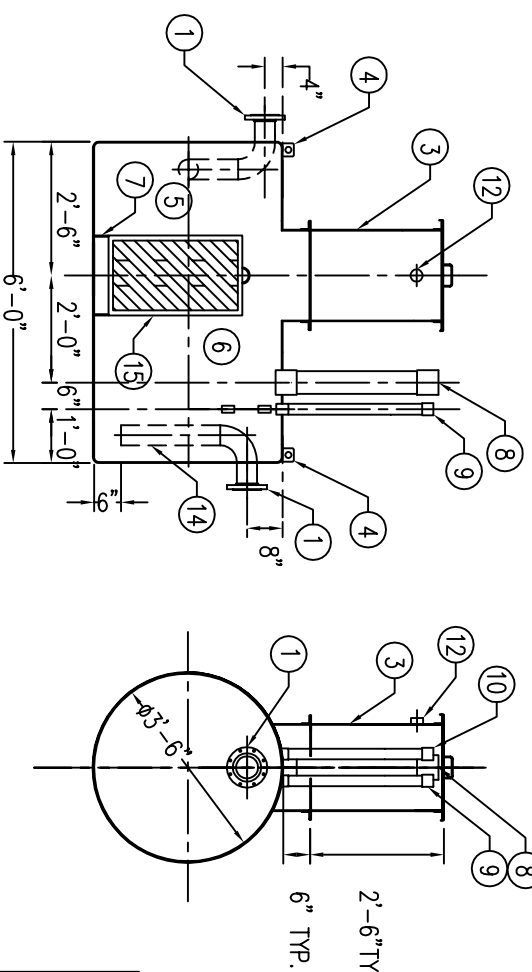


SPECIFICATIONS SUMMARY:

CAPACITY: 350 GALLON
 TYPE: DOUBLE WALL
 FLOW RATE: 0 - 35 GPM
 MATERIAL: CARBON STEEL
 THICKNESS:
 SHELL - 10 GA.
 HEADS - 10 GA.
 SURFACES TREATMENT:
 INNER - SSPC NO. 10 BLAST
 OUTER - SSPC NO. 6 BLAST
 COATINGS:
 INNER - COAL TAR EPOXY (16 MILS)
 OUTER - FRP (100 MILS)
 CONSTRUCTION:
 OPERATING PRESSURE: ATMOSPHERIC



- TANK DESCRIPTIONS:**
- ① 150# R.F. 4" FLANGE
 - ② DIFFUSION TEE
 - ③ 19" X 19" SQUARE MANWAY WITH BOLT-ON EXTENSION
 - ④ LIFTING LUGS
 - ⑤ SEDIMENT CHAMBER
 - ⑥ SEPARATION CHAMBER
 - ⑦ SLUDGE BAFFLE
 - ⑧ 4"Ø RISER PIPE FOR OIL PUMP-OUT
 - ⑨ 2"Ø RISER PIPE FOR LEVEL SENSOR
 - ⑩ 2"Ø RISER PIPE FOR INTERSTITIAL MONITOR
 - ⑪ (NOT USED)
 - ⑫ 2"Ø VENT
 - ⑬ MEDIA BAFFLE
 - ⑭ OUTLET DOWNCOMER
 - ⑮ COALESCING MEDIA PACK



- NOTES:**
1. VENT SIZING PER UL58. ALL VENT PIPING BY OTHERS.
 2. ALL EXTERIOR PIPING IS BY OTHERS.
 3. HYDRO-QUIP RECOMMENDS A MINIMUM SLOPE OF 1/16" PER FOOT FOR ALL GRAVITY PIPING.
 4. OIL STORAGE CAPACITY IS 30% OF TOTAL TANK VOLUME.
 5. INSTALL PER FURNISHED INSTRUCTIONS.
 6. THIRTY (30) YEAR WARRANTY PROVIDED ON EXTERIOR CORROSION PROTECTION.
 7. 1/8" THICK NEOPRENE 50 DMS GASKETS AT ALL CONNECTIONS.

REV.	DESCRIPTION	DATE	INT.
Wash Bay Solutions Engineered Wash & Reclaim Systems			
MODEL WB-QB-342DW OIL/WATER SEPARATOR		DRN. BR: TBA CHKD BY:	DATE: 2/19/13 SCALE: 3/8" = 1"
PROJECT:		FILE: H08342dw.rxdwg	REF: 4
THIS DRAWING IS PROPERTY OF HERRICK, QUINN & CO. INC. AND MUST NOT BE REPRODUCED OR OTHERWISE USED WITHOUT PERMISSION.			